

Sitecore Commerce - A to Z

A training that helps you learn and get hands-on with Sitecore Commerce

4-days classroom- based course



Hands-on course

Delivered by experienced Sitecore Commerce Specialist



From introduction to advanced features of Sitecore Commerce



Covers the anatomy of the platform, what it takes to implement it right and pitfalls to avoid



What will you **learn**?



All aspects of the system



Create a brand-new fully functional Commerce Website

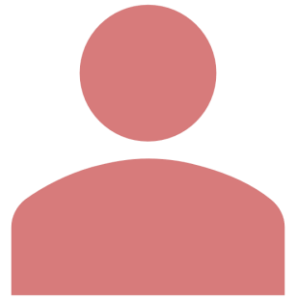


Extend Sitecore Commerce - Front-end, Minions/Plugins



Advanced Topics - Integrations, JSS, Headless

Who should **Attend**?



Sitecore developers looking
to learn Commerce



.NET developers with
knowledge of .NET core

Course Overview

Course Agenda

Sitecore Commerce Introduction and platform deep dive

- Commerce Overview
- Commerce architecture and scaling for performance
 - Commerce Connect & Commerce Engine Connect
 - Commerce Roles
- Installing commerce - deep-dive into SIF scripts and common mistakes to avoid
- Business tools, OOB storefront and Commerce features
 - Commerce Catalog, Control Panel etc.
 - Merchandising manager
 - Order manager
 - Customer manager
 - Pricing and promotions

Create and manage a new Commerce Storefront

- Use SXA to create a new Commerce Storefront
- Build frontend
- User management
- Edit OOB commerce components

Course Agenda

Commerce marketing features

- Commerce Connect rules, OOB and custom
- Working with Automation plans

Setting up development environment

- .NET core and Commerce SDK, service proxy etc.
- Overview of plugins and making them work with Commerce Engine
- Details of commerce connect configurations
- Testing & Deployment

Extending Commerce & Extend Business tools (Plugins and Minions)

- Use your custom payment provider
- Build employee reward management store
 - Create rewards management functionality/views in Business tools
 - Manage discounts using promotions integrated with reward management functionality
 - Show discounted prices on product listing and details page.
 - Update cart and orders with the discount information
- Personalize a product - sending data to third party service

Advance topics

- Using commerce service proxy without SXA storefront,
- Headless, JSS chatbots etc.



Logistics



Format

Instructor Led
Hands-on
implementing real-life
scenarios



Venue

Our London office
Or anywhere across the
globe.



Duration

4 Days



Handouts

Student lab guide
(**digital format only**)



Laptops, VMs and Connectivity

Bring your own
Laptops, VMs will be
provided

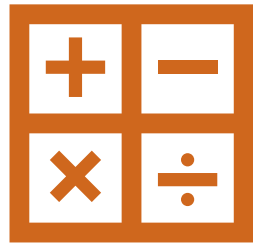


Food & Drinks

Light Breakfast and
Lunch
Tea, Coffee and snacks

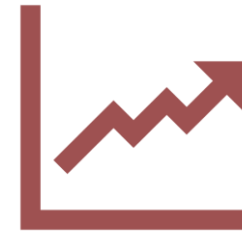
Client need to ensure high speed connectivity when the training is delivered out of their location

Fees



Up to 10

£2,200 per Trainee



11-15

First 10 - **£2,200** per trainee

11-15 - **£1,980** per trainee

VAT and other government taxes are extra and charged at actuals.

Fee doesn't include travel and subsistence expenses for trainings to be delivered outside of M25, London

Terms & Conditions

- All rights reserved, no content of this presentation should be copied or distributed without written permission from Assurex Limited.
- Contents of the training are subject to change without any notice.
- Prices quoted here are subject to change without any notice.
- VAT or any applicable taxes are charged as per the applicable law.
- Any travel expenses, accommodation and subsistence for travel outside of M25 in London will be charged on actuals as per the prevailing travel policy.
- All payments must be made upfront at the time of booking.
- Cancellation policy
 - Cancellation up to 30 days before the training - 10% is deducted to cover admin cost
 - Cancellation within 30 days and up to two weeks before the delivery day - 50%
 - Cancellation within 2 weeks of delivery date - No refund
- Rescheduling requires a notice of at least 2 weeks and subject to rescheduling fees charged by the venue and other logistical support. To be charged at actuals.
- We will provide the VMs for hands-on exercises and trainees must bring their own laptops.
- In case the training is delivered at the venue provided by the client, the client will ensure the availability of high-speed internet access.

Thank **You!**



INFO@ASSUREX.CO



ASSUREX LIMITED
INTERNATIONAL HOUSE
24 HOLBORN VIADUCT
LONDON
EC1A 2BN